

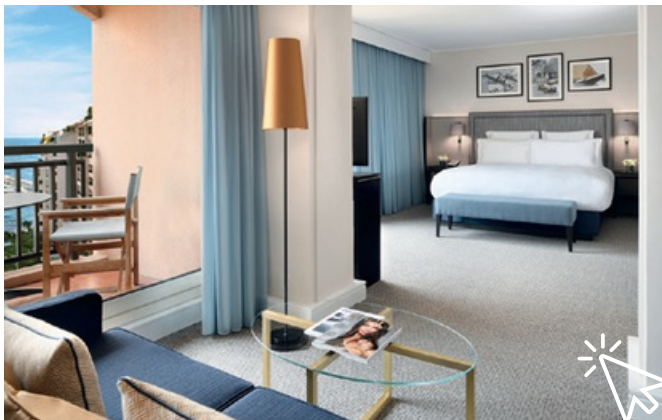


COLUMBUS

MONTE-CARLO



COLUMBUS HOTEL MONTE-CARLO, CURIO COLLECTION BY HILTON IS THE BOUTIQUE HOTEL OF CHOICE FOR THOSE SEEKING AN AUTHENTIC TASTE OF MONACO LIFESTYLE



ROOMS & SUITES

181 designer Rooms and Suites, most with terraces overlooking the Princess Grace Rose Garden, the Mediterranean sea, Monaco Palace or the old city. All Rooms and Suites are soundproofed and equipped with a heating / air conditioning control system and dimmable lightening. Family-friendly and pet-friendly amenities are available.

All Rooms and Suites are equipped with:



[VISIT YOUR ROOM](#)

35 Superior Rooms*	21m2 -31m2
89 Deluxe Rooms*	23m2 -31m2
18 Riviera Rooms (Queen, Sea View)	23m2
10 Riviera Deluxe Rooms (Queen, Sea View)	25m2
2 Accessible Rooms (King, Sea View)	45m2
10 Lifestyle Suites (Queen, Sea View)	32m2
7 Riviera Suites* (Sea View)	45m2
4 Top Floor Suites*	45m2
5 Rose Garden Suites*	55m2
1 Columbus Suite* (2 bedrooms, 2 bathrooms, large living area with terrace and 2 further terraces)	71m2
1 Family Suite* (2 Top Floor Suites with private connecting corridor)	90m2

*multiple bedding types available (Queen, King and/or Twin)



THE BAR & LOBBY LOUNGE

Sleek in design, cosy in ambience, our the bar offers a wide range of alcoholic and non-alcoholic drinks and a dining menu from 4 pm to 11 pm*. Our Lounge is located within the lobby – the perfect choice for coffee, a catch up of the day's news or to enjoy the rhythm of the hotel's heart. During the summer months, the bar can be found on the terrace.



INDOOR & OUTDOOR DINING

Breakfast is served every day from 6.30 am to 10.30 am. Our restaurant is open from 12 am to 2.30 pm, 5 days a week*, serving fresh Mediterranean food and daily specials. Seating is for 90 in our dining room and 40 on the outdoor terrace overlooking the Princess Grace Rose Garden.



RIVAMARE CHARTER

Explore the hidden gems of the Riviera from a fresh perspective aboard our hotel-owned Rivamare! A masterpiece of engineering and design with elegant, flowing curves, the Rivamare is a sporty 39 ft motorboat that will guarantee you exceptional sensations. With a dedicated skipper, up to six passengers can enjoy tailor-made excursions, with optional gourmet snack packages to elevate the experience. Service reserved for hotel guests and subject to availability and meteorological conditions. *



LEISURE

- Heated outdoor pool with sea view open between April and November*
- Solarium with sun beds
- Fitness room with Technogym equipment, accessible 24/7
- Running circuit opposite hotel through the Princess Grace Rose Garden and along the sea front
- Family-friendly amenities within the neighbouring park: playground for two age groups, merry-go-round, and pond with turtles and ducks

SERVICES

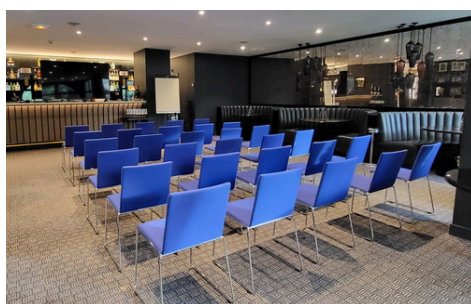
- 24/7 Guest Service
- Porterage / Valet parking
- Laundry service
- Luxury electric Mercedes Viano shuttle (with a specific schedule and circuit, inside Monaco and outbound from the hotel only)
- Secure, on-site indoor parking for 75 vehicles
- Charging stations for electric vehicles



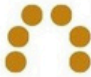




* Subject to change



MEETINGS & EVENTS

- Can cater for groups of 10 up to full privatisation of hotel
- 1 luxurious boardroom for up to 10 delegates
- 7 Suites can be converted into breakout rooms for up to 12 delegates (seated) and up to 20 delegates (theatre style)
- Bar, restaurant and/or terrace can be privatised for use as unique venue for incentives, product launches and private events (upon availability)
- All lights dimmable
- Floor box with multi-sockets and data points
- Superfast Wifi connection
- USB charging points
- 55" wall-mounted TV with camera for video and audio conferences



Salle de réunion Meeting room Sale de riunione	Longueur Lenght Larghezza	Largeur Width Larghezza	Height Hauteur Altezza							
	m	m	m	Théâtre	Cabaret	U-Shape	Boardroom	Cocktail	Ecole	Banquet
Bar	11	8	2.7	40	35	20	20	80	20	40
Restaurant	11	20	2.7	-	-	-	-	150	-	70
Terasse Restaurant	7	20	-	-	-	-	-	70	-	40
Restaurant + Terasse	-	-	-	-	-	-	-	220	-	110
Riviera Room	6.6	3.2	2.5	-	-	-	10	-	-	-
Suite Convertible	7.5	3	2.5	20	-	12	12	-	-	-





ATTRACTIONS

- ① Larvotto Beach
- ② Japanese Garden
- ③ Grimaldi Forum
- ④ Shopping
- ⑤ Café de Paris & Casino
- ⑦ Yacht Club
- ⑧ Train Station
- ⑨ Farmer's market
- ⑫ Prince's Palace
- ⑬ Oceanographic Museum
- ⑮ Exotic Gardens & Observation Cave
- ⑯ Louis II Stadium
- ⑰ City & Tourist Bus
- ⑱ Princess Grace Rose Garden
- ⑲ Circus - Chapiteau de Fontvieille
- ⑳ Heliport
- ㉑ Columbus Beach (Marquet Beach)

VIEW-POINTS

- ④ Italy & Old Town
- ⑩ Frame-like structure onto port & Monte-Carlo
- ⑪ Port Hercule & Monte Carlo
- ⑭ Fontvieille & Cap d'Ail

ACCESS & NEIGHBOURHOOD

Helicopter: The heliport is situated across the Princess Grace Rose Garden. (7min flight to Nice Airport) with free shuttle bus transfer.

Airport: International Nice Côte d'Azur is 25km/15.5miles away. 30min by highway A8.

City bus: 50m from the hotel with easy access to all main touristic places. Hop On Hop Off touristic city tour bus stop.
Express bus stop to the airport (10min from the hotel).

Train: Monaco Station (TGV - Regular local trains for exploring the Riviera).

Walking from the hotel you will find:

Within 5 min: Fontvieille and its many great restaurants and pubs (La Saliere, Perles de Monaco, and Beef Bar of particular note). The Princess Grace Rose Garden. The International Circus Festival. Louis II Football Stadium (home to AS Monaco).

Within 10 min: Cap d'Ail beaches. The Hercule main harbour (where the F1 GP starts). The city market and its much-loved snacking stands.

Within 15 min: The old town. The Palace. The Oceanographic Museum. The Cathedral. The train station.

DISCOVER OUR
TOURIST GUIDE